



MEMORANDUM

To: Donna E. Shalala, President

From: Mary Coombs  
Chair, Faculty Senate

A handwritten signature in black ink that reads "Mary Coombs". The signature is written in a cursive style and is positioned to the right of the printed name.

Date: March 2, 2006

Subject: Faculty Senate Legislation #2005-08(B) – Establishment of the Wallace H. Coulter Center for Translational Research

\*\*\*\*\*

The Faculty Senate, at its February 22, 2006 meeting, voted unanimously to approve a proposal to establish the Wallace H. Coulter Center for Translational Research. The proposal is enclosed for your reference.

This legislation is now forwarded to you for your action.

MC/rh

cc: Thomas LeBlanc, Executive Vice President and Provost  
John Clarkson, Dean, Miller School of Medicine  
Lewis M. Temares, Dean, College of Engineering  
Norma Sue Kenyon, Director, Coulter Center for Translational Research

[Please contact the Senate office to view this proposal.]

Faculty Senate  
1252 Memorial Drive, 325 Ashe Admin. Bldg.  
Coral Gables, Florida 33124  
Phone: (305) 284-3721 • Fax: (305) 284-5515  
<http://www.miami.edu/FacultySenate>  
email: [facsen@miami.edu](mailto:facsen@miami.edu)



MEMORANDUM

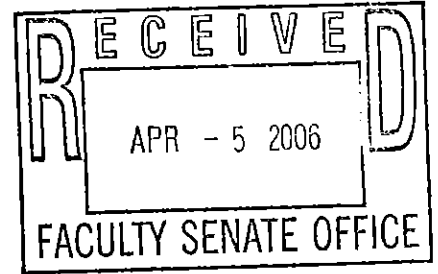
IN/OUT KL RH (F) C

To: Donna E. Shalala, President

From: Mary Coombs  
Chair, Faculty Senate

*Mary Coombs*

Date: March 2, 2006



Subject: Faculty Senate Legislation #2005-08(B) – Establishment  
Center for Translational Research

\*\*\*\*\*

The Faculty Senate, at its February 22, 2006 meeting, voted unanimously to approve a proposal to establish the Wallace H. Coulter Center for Translational Research. The proposal is enclosed for your reference.

This legislation is now forwarded to you for your action.

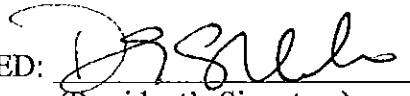
MC/rh

- cc: Thomas LeBlanc, Executive Vice President and Provost
- John Clarkson, Dean, Miller School of Medicine
- Lewis M. Temares, Dean, College of Engineering
- Norma Sue Kenyon, Director, Coulter Center for Translational Research

Faculty Senate  
 1252 Memorial Drive, 325 Ashe Admin. Bldg.  
 Coral Gables, Florida 33124  
 Phone: (305) 284-3721 • Fax: (305) 284-5515  
<http://www.miami.edu/FacultySenate>  
 email: facsen@miami.edu

CAPSULE: Faculty Senate Legislation #2005-08(B) – Establishment of the Wallace H. Coulter Center for Translational Research

**PRESIDENT'S RESPONSE**

APPROVED:  DATE: April 3 2006  
(President's Signature)

OFFICE OR INDIVIDUAL TO IMPLEMENT: Finney, Sr VP for Medical Affairs

EFFECTIVE DATE OF LEGISLATION: \_\_\_\_\_  
(if other than June 1 next following)

NOT APPROVED AND REFERRED TO: \_\_\_\_\_

REMARKS (IF NOT APPROVED): \_\_\_\_\_

## **Proposal to the Faculty Senate for Establishment of the Wallace H. Coulter Center for Translational Research**

### **Mission**

The mission of the Wallace H. Coulter Center at the University of Miami is to promote translational research in biomedical science and engineering by capitalizing on research projects that address an unmet clinical need and have commercial potential. This will be achieved by providing the investigator with the infrastructure, core capabilities and expertise to carry the project from an experimental finding to a tangible application that enhances quality of life and has significant impact on public health. Projects will be selected from investigators at the U of Miami, including but not necessarily limited to the:

- Diabetes Research Institute,
- Sylvester Comprehensive Cancer Center,
- Miami Project to Cure Paralysis,
- Bascom Palmer Eye Institute,
- Department of Biomedical Engineering.

### **Vision**

To become a leading technology development organization within an academic setting in the United States, with an emphasis on applied bioscience that has significant clinical and commercial impact on the socio-economic wellbeing of the public. The Center will be the seedbed for breakthrough treatments for diabetes, cancer, arthritis, eye disease, spinal cord and traumatic brain injury and paralysis. This Center will harness the University of Miami's proven leadership in large scale cell culturing, cellular and tissue transplantation, tissue regeneration and implantable biomaterials and devices.

### **Goals**

- To become a self-sustaining center within 9 years.
- To establish a team of highly effective individuals, including a Director of Operations and a Director of Business Development, to lead the Center's efforts.
- To establish the administrative infrastructure to carry out the goals and objectives of the Center.
- To identify and manage translational research projects which address an unmet clinical need and have commercial potential and transition the projects to a commercial venture.

### **Participants**

The Center has no permanent faculty. **University of Miami** students and **post-doctoral** fellows will participate in Center activities **under the direction of their project PI** but not as part of a formal instruction process. The President will designate a university official

(President's Designee) to oversee the activities of the Center and the Center Director. A Director of Business Development and a Director of Operations will be appointed to assist the Director with technology transfer/business relationships and administrative/operational concerns, respectively. Appendix C details the reporting relationships. An Internal Advisory Board, consisting of the President's Designee (ex officio), the Center Director (ex officio) and 6 senior faculty who are actively involved in translational research related to the Center's mission, will be appointed and will meet quarterly (at a minimum) to oversee the activities of the Center. An External Advisory Board, consisting of 5 individuals from the business community (venture capitalists, entrepreneurs, business men and women) who are qualified to assess the Center's progress in relation to commercial potential, will meet twice a year to further overview the Center's performance and provide guidance. **The President's Designee will appoint the members of the External and Internal Advisory Boards.**

On an annual basis, the President's Designee will formally review the Director's performance. Should the need for a new Director arise, the President's designee will identify and appoint a new Director. As stated in the faculty manual of the University of Miami (C18.2.1), a review will be required 5 years after initiation of the center in order to obtain approval from the Faculty Senate for continued operation.

#### **Facilities**

The Center shares the cGMP facility that constitutes the 4th floor of the Diabetes Research Institute with the DRI for the conduct of clinical trials that involve cells or biological modifiers. In addition, 5,000 sq ft on the second floor of the Fox building is being renovated to serve as flexible wet lab space that will incorporate tissue culture and open lab space, plus a conference room for the center and offices for 1) a technology transfer/business director hire and 2) a regulatory hire and a lab manager. Additional administrative space (the Director's office, an office for the Operations Director and a shared meeting room space) is located on the 6th floor of the DRI. This constitutes 16,000 sq ft of space in total.

#### **Project Selection**

Translational research projects in biomedical science and engineering that address an unmet clinical need and have commercial potential will be considered for entry into the Center. Projects will be selected from proposals submitted by faculty investigators at the U of Miami, including but not necessarily limited to, the Diabetes Research Institute, Sylvester Comprehensive Cancer Center, Miami Project to Cure Paralysis, Bascom Palmer Eye Institute, and the Department of Biomedical Engineering. As specified by the Wallace H Coulter Foundation, a Selection Committee consisting of the President's Designee, the Center Director, the Deans of the Medical School and the School of Engineering, and a venture capitalist and a business person will select projects for entry into the center. The Internal Advisory Board, as well as the Director of Business Development, will also review the applications and will provide a recommendation to the Selection Committee.

Requests for proposals will issue once or twice a year (frequency will be determined based on availability of space and funding). Applicants must be full time faculty members submitting projects that meet the criteria of translational research in biomedical science and

engineering. Projects will not remain in the center for more than 1-2 years without resubmission and must have clearly defined milestones. Projects must meet the following criteria: a) address an unmet clinical need, b) have the potential to be in a phase one trial within 3-5 years, or in the case of a device, to be marketable within 5 years, c) patent or similar protection can be obtained for such product by the Center, and d) the product has commercial potential.

### **Sources of Funding**

The Wallace H. Coulter Foundation has awarded a grant of 13,000,000 dollars to the University of Miami. The Center itself will apply for grants and contracts, and additional funds will be supplied by U of M Departments and the school itself. The proposed budget for the center is shown in Appendix B. The required funds, in addition to the Coulter Grant, are expected to come from the grants of investigators using the center and are guaranteed by funding from the participating unit, the Dean of the Miller School of Medicine and the Provost, as shown in Appendix B. In addition, revenues generated from patents will be shared with the Wallace H. Coulter Center; the breakdown will be: 1/3 to the inventors, 1/3 to the department and 1/3 to the Center.

The majority of the Center's budget in year 01-02 will be utilized for renovation and equipment purchase. Salaries for the Director of Operations, Director of Business Development and 1/2 FTE administrative assistant, as well as part of the Director's salary are included. The Center is in the process of contracting for regulatory assistance; within the next 1-2 years, a permanent hire will replace consultants. A lab manager for the flexible wet lab space in Fox and a PhD scientist to oversee cell expansion and production of biological modifiers will be added in the next year. Since the Center must eventually become self-sustaining, and provision of project funds is critical, the focus will be on hiring only absolutely essential personnel. Project funds, purchase of new equipment that allows for access to emerging technologies, dollars for intellectual property concerns (patents, attorneys), equipment maintenance contracts, space charges and other general needs (phones, network, etc.) are also included in the budget.

**Additional Information: Proposal to the Faculty Senate for Establishment of the  
Wallace H. Coulter Center for Translational Research**

Dr. Luis Glaser is the President's Designee.

Dr. Norma Sue Kenyon (vita in appendix A) will serve as Center Director.

An Internal Advisory Board has been established and consists of Drs.:

Herman Cheung - Biomedical Engineering  
Luis Glaser - President's Designee  
Camillo Ricordi - Diabetes Research Institute  
Dalton Dietrich - Miami Project to Cure Paralysis  
Elizabeth Fini - Bascom Palmer Eye Institute  
Norma Kenyon - Center Director  
Eckhard Podack - Sylvester Cancer Center  
Joseph Rosenblatt - Sylvester Cancer Center

Dr. Robert Strauss of Noven Pharmaceuticals has agreed to chair the External Advisory Board and he is working with Drs. Glaser and Kenyon to identify and appoint members.

Project Selection Committee

Dr. John Clarkson  
Dr. Philip George  
Dr. Luis Glaser  
Dr. Norma Kenyon  
Dr. Leonard Pinchuk  
Dr. Lewis Temares

## **Appendix A**

Curriculum vitae for Norma Sue Kenyon – Center Director

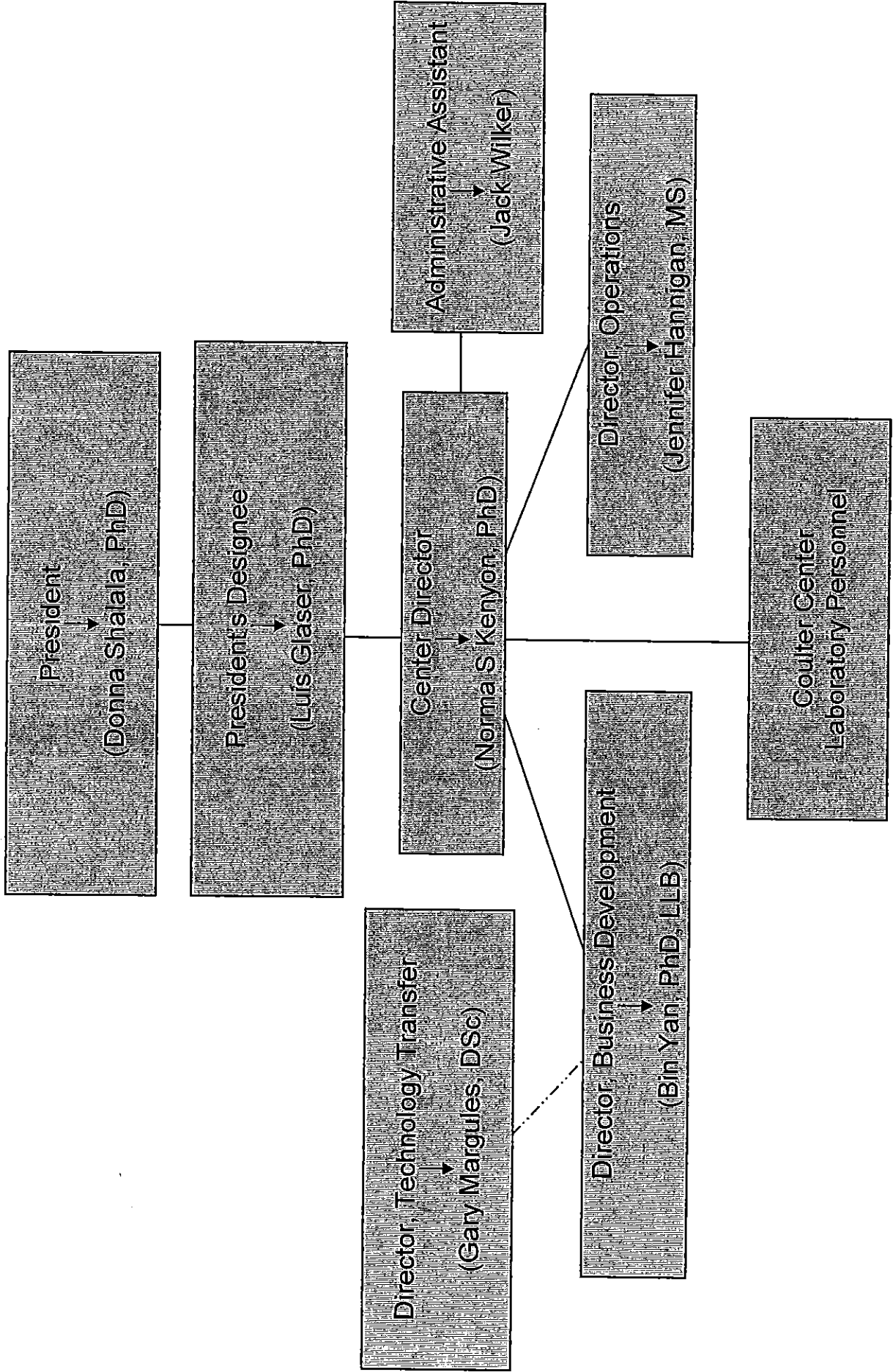
Visit <https://www.miami.edu/faculty-senate/Temp/appendix-A-cv.pdf> to view.



Appendix B  
Budget for WHC Center

	UM	WHCC				
Year 01*	1,500,000	2,600,000				
Year 02*	250,000	2,600,000				
Year 03*	500,000	2,600,000				
Year 04	750,000	2,600,000				
Year 05	1,000,000	2,600,000				
Year 06	2,000,000					
Year 07	2,000,000					
Year 08	2,000,000					
Year 09	2,000,000					
total	12,000,000	13,000,000				
*total of \$2,000,000/\$2,250,000 credit in years 01-03 can be given to UM for funds spent for the space to house the center						

# Appendix C: Wallace H Coulter Center Reporting Relationships



## Faculty Senate Office

---

**From:** Faculty Senate Office  
**Sent:** Monday, April 10, 2006 3:51 PM  
**To:** LeBlanc, Thomas J; Goldschmidt-Clermont, Pascal J; Temares, M. Lewis; Kenyon, Norma Sue  
**Cc:** Markowitz, Elizabeth Paz  
**Subject:** FW: Legislation #2005-08(B)

**Attachments:** 2005-08.pdf



2005-08.pdf (771 KB)

Attached is your copy of Legislation #2005-08(B) - Establishment of the Wallace H. Coulter Center for Translational Research that was approved by the President.

Regards,  
Robyn Hardeman

-----Original Message-----

**From:** Faculty Senate Office  
**Sent:** Monday, March 06, 2006 1:47 PM  
**To:** Clarkson, John G.; Temares, M. Lewis; 'Kenyon, Norma'  
**Subject:** Legislation #2005-08(B) - not final

Attached is your copy of Legislation #2005-08(B) - Establishment of the Wallace H. Coulter Center for Translational Research which is pending based on approval by the President. You will be sent a copy of the final legislation once approved by the President.

Regards,  
Robyn Hardeman

Faculty Senate Office  
1252 Memorial Drive  
325 Ashe Admin. Building  
Coral Gables, Florida 33146  
Loc. 4634  
Phone: (305) 284-3721  
Fax: (305) 284-5515  
<http://www.miami.edu/fs>

## Faculty Senate Office

---

**From:** Faculty Senate Office  
**nt:** Monday, March 06, 2006 1:47 PM  
**o:** Clarkson, John G.; Temares, M. Lewis; 'Kenyon, Norma'  
**Subject:** Legislation #2005-08(B) - not final

**Attachments:** 20060303123641.001.PDF



20060303123641.0  
01.PDF (752 KB...

Attached is your copy of Legislation #2005-08(B) - Establishment of the Wallace H. Coulter Center for Translational Research which is pending based on approval by the President. You will be sent a copy of the final legislation once approved by the President.

Regards,  
Robyn Hardeman

Faculty Senate Office  
1252 Memorial Drive  
325 Ashe Admin. Building  
Coral Gables, Florida 33146  
Loc. 4634  
Phone: (305) 284-3721  
Fax: (305) 284-5515  
<http://www.miami.edu/fs>

**February 22, 2006  
Faculty Senate minutes**

The meeting, held in the Seminar Room, Rosenstiel Campus, opened at 3:35 p.m.

**CHAIR'S REMARKS**

As indicated in her memorandum to Senators, the Chair noted that Ramon Lemos recently died and requested that there be a moment of silence in his memory. She also noted that the President will address the issue of the possibility of a UNICCO strike vote.

**PRESIDENT'S REMARKS**

The President noted that with regard to the UNICCO workers' issue, the University is two bodies, the University and the faculty; the former must maintain "neutrality" in the unionization campaign until the issue is resolved but the latter are free to express their views, keeping in mind the need to fulfill the "core mission" of the University; the University must also obey our own policies concerning solicitations and demonstrations. She assured the Senate that whatever action the workers may choose, the University will stay open, classrooms will continue to be cleaned, and nothing will be canceled. She reported that the Executive Committee of the Board of Trustees has approved over \$13 million for the Cox Science Building renovations, helped by funding from the Four Fillies home sales. Regarding other housing issues, she talked about the development of South Campus near MetroZoo, where 1200 homes will be built as part of a community based on the "new urbanism" approach of Dean Elizabeth Plater-Zyberk; it will include a public school for grades six through twelve modeled after the Bronx School of Science. She reiterated that 16 rental townhouses will be built to act as a buffer between the Coral Gables neighbors and the new University Village student housing; they will be available for new faculty.

The President answered numerous questions from the floor.

**APPROVAL OF AGENDA**

The meeting agenda *passed unanimously*.

**APPROVAL OF MINUTES**

The minutes of January 25, 2006, *were approved unanimously*.

**PROPOSAL FOR THE ESTABLISHMENT OF THE CENTER FOR TRANSLATIONAL RESEARCH**

Norma Kenyon presented the amended proposal as requested by the General Welfare Committee. The changes are in boldface type on the revised proposal in the section on "participants" and included clarifying that University of Miami students and post-doctoral fellows work in the center under the direction of their project PI, that the President's Designee would appoint members of the External and Internal Advisory Board, and the actual numbers of board members will six for internal board and five for the external board).

**PROPOSED REVISION TO THE JAMES W. MCLAMORE AWARD NOMINATING CRITERIA**

The Chair presented the changes to the charge as recommended by the General Welfare Committee.

The Senate voted *unanimously* to accept the changes.

**PROPOSED MODIFICATION TO SECTION B3.3 OF THE FACULTY MANUAL TO CLARIFY FORMULA USED FOR SENATE APPORTIONMENT**

The Chair presented the changes to the *Faculty Manual* as recommended by the General Welfare Committee.

The Senate voted *unanimously* to accept the changes.

**OTHER BUSINESS**

A Senate member asked for a summary of the meeting with the Senate Chair and the President regarding the issue of unionization. The Chair explained that it was an informal meeting with Rene Sacasas, Dennis Lynch, the President, and herself and focused on discussion about the demonstration issue and the confusion of what the rules were both by the union and by the administration. To her knowledge, the matter has since been clarified.

Another Senate member asked the Provost about the possibility that the picketers would block access to parking lots or other locations and disruptions and what appropriate faculty response would be in that situation. The Provost explained that the administration would enforce rules consistently. He reiterated that the University's neutrality will end when UNICCO decides to unionize or not.

The meeting adjourned at 4:30 p.m.

Robyn Hardeman  
Faculty Senate Office

**Proposal to the Faculty Senate for Establishment of the  
Wallace H. Coulter Center for Translational Research**

**Mission**

The mission of the Wallace H. Coulter Center at the University of Miami is to promote translational research in biomedical science and engineering by capitalizing on research projects that address an unmet clinical need and have commercial potential. This will be achieved by providing the investigator with the infrastructure, core capabilities and expertise to carry the project from an experimental finding to a tangible application that enhances quality of life and has significant impact on public health. Projects will be selected from investigators at the U of Miami, including but not necessarily limited to the:

- Diabetes Research Institute,
- Sylvester Comprehensive Cancer Center,
- Miami Project to Cure Paralysis,
- Bascom Palmer Eye Institute,
- Department of Biomedical Engineering.

**Vision**

To become a leading technology development organization within an academic setting in the United States, with an emphasis on applied bioscience that has significant clinical and commercial impact on the socio-economic wellbeing of the public. The Center will be the seedbed for breakthrough treatments for diabetes, cancer, arthritis, eye disease, spinal cord and traumatic brain injury and paralysis. This Center will harness the University of Miami's proven leadership in large scale cell culturing, cellular and tissue transplantation, tissue regeneration and implantable biomaterials and devices.

**Goals**

- To become a self-sustaining center within 9 years.
- To establish a team of highly effective individuals, including a Director of Operations and a Director of Business Development, to lead the Center's efforts.
- To establish the administrative infrastructure to carry out the goals and objectives of the Center.
- To identify and manage translational research projects which address an unmet clinical need and have commercial potential and transition the projects to a commercial venture.

**Participants**

The Center has no permanent faculty. **University of Miami students and post-doctoral fellows will participate in Center activities under the direction of their project PI but not as part of a formal instruction process.** The President will designate a university official

(President's Designee) to oversee the activities of the Center and the Center Director. A Director of Business Development and a Director of Operations will be appointed to assist the Director with technology transfer/business relationships and administrative/operational concerns, respectively. Appendix C details the reporting relationships. An Internal Advisory Board, consisting of the President's Designee (ex officio), the Center Director (ex officio) and 6 senior faculty who are actively involved in translational research related to the Center's mission, will be appointed and will meet quarterly (at a minimum) to oversee the activities of the Center. An External Advisory Board, consisting of 5 individuals from the business community (venture capitalists, entrepreneurs, business men and women) who are qualified to assess the Center's progress in relation to commercial potential, will meet twice a year to further overview the Center's performance and provide guidance. **The President's Designee will appoint the members of the External and Internal Advisory Boards.**

On an annual basis, the President's Designee will formally review the Director's performance. Should the need for a new Director arise, the President's designee will identify and appoint a new Director. As stated in the faculty manual of the University of Miami (C18.2.1), a review will be required 5 years after initiation of the center in order to obtain approval from the Faculty Senate for continued operation.

#### **Facilities**

The Center shares the cGMP facility that constitutes the 4th floor of the Diabetes Research Institute with the DRI for the conduct of clinical trials that involve cells or biological modifiers. In addition, 5,000 sq ft on the second floor of the Fox building is being renovated to serve as flexible wet lab space that will incorporate tissue culture and open lab space, plus a conference room for the center and offices for 1) a technology transfer/business director hire and 2) a regulatory hire and a lab manager. Additional administrative space (the Director's office, an office for the Operations Director and a shared meeting room space) is located on the 6th floor of the DRI. This constitutes 16,000 sq ft of space in total.

#### **Project Selection**

Translational research projects in biomedical science and engineering that address an unmet clinical need and have commercial potential will be considered for entry into the Center. Projects will be selected from proposals submitted by faculty investigators at the U of Miami, including but not necessarily limited to, the Diabetes Research Institute, Sylvester Comprehensive Cancer Center, Miami Project to Cure Paralysis, Bascom Palmer Eye Institute, and the Department of Biomedical Engineering. As specified by the Wallace H Coulter Foundation, a Selection Committee consisting of the President's Designee, the Center Director, the Deans of the Medical School and the School of Engineering, and a venture capitalist and a business person will select projects for entry into the center. The Internal Advisory Board, as well as the Director of Business Development, will also review the applications and will provide a recommendation to the Selection Committee.

Requests for proposals will issue once or twice a year (frequency will be determined based on availability of space and funding). Applicants must be full time faculty members submitting projects that meet the criteria of translational research in biomedical science and



engineering. Projects will not remain in the center for more than 1-2 years without resubmission and must have clearly defined milestones. Projects must meet the following criteria: a) address an unmet clinical need, b) have the potential to be in a phase one trial within 3-5 years, or in the case of a device, to be marketable within 5 years, c) patent or similar protection can be obtained for such product by the Center, and d) the product has commercial potential.

### **Sources of Funding**

The Wallace H. Coulter Foundation has awarded a grant of 13,000,000 dollars to the University of Miami. The Center itself will apply for grants and contracts, and additional funds will be supplied by U of M Departments and the school itself. The proposed budget for the center is shown in Appendix B. The required funds, in addition to the Coulter Grant, are expected to come from the grants of investigators using the center and are guaranteed by funding from the participating unit, the Dean of the Miller School of Medicine and the Provost, as shown in Appendix B. In addition, revenues generated from patents will be shared with the Wallace H. Coulter Center; the breakdown will be: 1/3 to the inventors, 1/3 to the department and 1/3 to the Center.

The majority of the Center's budget in year 01-02 will be utilized for renovation and equipment purchase. Salaries for the Director of Operations, Director of Business Development and 1/2 FTE administrative assistant, as well as part of the Director's salary are included. The Center is in the process of contracting for regulatory assistance; within the next 1-2 years, a permanent hire will replace consultants. A lab manager for the flexible wet lab space in Fox and a PhD scientist to oversee cell expansion and production of biological modifiers will be added in the next year. Since the Center must eventually become self-sustaining, and provision of project funds is critical, the focus will be on hiring only absolutely essential personnel. Project funds, purchase of new equipment that allows for access to emerging technologies, dollars for intellectual property concerns (patents, attorneys), equipment maintenance contracts, space charges and other general needs (phones, network, etc.) are also included in the budget.

**Additional Information: Proposal to the Faculty Senate for Establishment of the  
Wallace H. Coulter Center for Translational Research**

Dr. Luis Glaser is the President's Designee.

Dr. Norma Sue Kenyon (vita in appendix A) will serve as Center Director.

An Internal Advisory Board has been established and consists of Drs.:

Herman Cheung - Biomedical Engineering

Luis Glaser - President's Designee

Camillo Ricordi - Diabetes Research Institute

Dalton Dietrich - Miami Project to Cure Paralysis

Elizabeth Fini - Bascom Palmer Eye Institute

Norma Kenyon - Center Director

Eckhard Podack - Sylvester Cancer Center

Joseph Rosenblatt - Sylvester Cancer Center

Dr. Robert Strauss of Noven Pharmaceuticals has agreed to chair the External Advisory Board and he is working with Drs. Glaser and Kenyon to identify and appoint members.

Project Selection Committee

Dr. John Clarkson

Dr. Philip George

Dr. Luis Glaser

Dr. Norma Kenyon

Dr. Leonard Pinchuk

Dr. Lewis Temares

## **Appendix A**

Curriculum vitae for Norma Sue Kenyon – Center Director

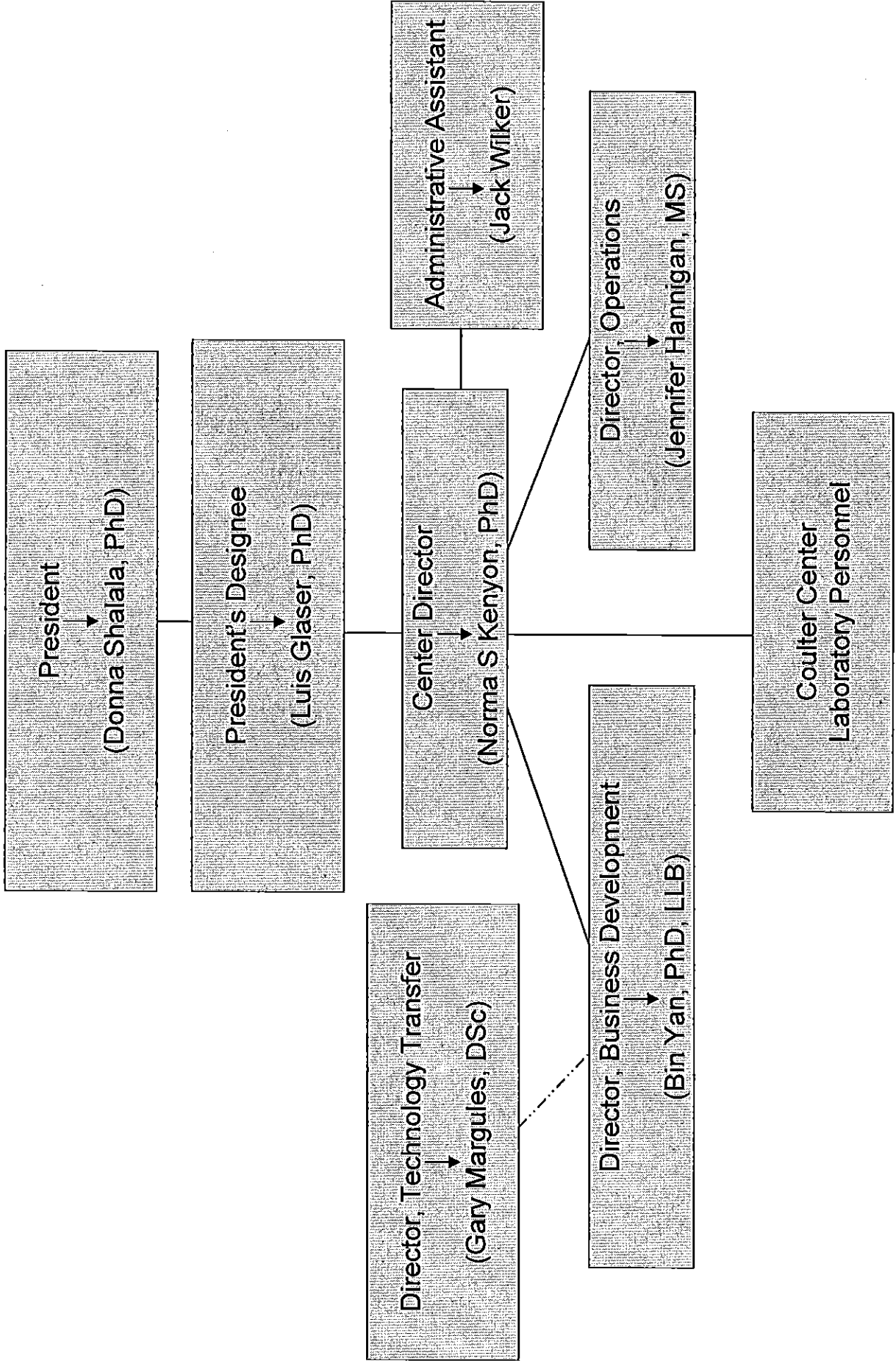
Visit <https://www.miami.edu/faculty-senate/Temp/appendix-A-cv.pdf> to view.

Appendix B  
Budget for WHC Center

	UM	WHCC					
Year 01*	1,500,000	2,600,000					
Year 02*	250,000	2,600,000					
Year 03*	500,000	2,600,000					
Year 04	750,000	2,600,000					
Year 05	1,000,000	2,600,000					
Year 06	2,000,000						
Year 07	2,000,000						
Year 08	2,000,000						
Year 09	2,000,000						
total	12,000,000	13,000,000					

\*total of \$2,000,000/\$2,250,000 credit in years 01-03 can be given to UM for funds spent for the space to house the center

**Appendix C: Wallace H Coulter Center Reporting Relationships**





Print this page | E-mail

UM Home > Faculty Senate Home page > **2-06-and-3-06-fs-newsletter**

## **2-06-and-3-06-fs-newsletter**

### **SENATE NEWSLETTER**

This newsletter contains information of general interest to the Faculty as well as a summary of the Senate meetings of February 22, 2006 and March 22, 2006. Materials related to these meetings may be found by following the links from <http://www.miami.edu/FacultySenate>.

### **ANNOUNCEMENTS**

Ramon Lemos, Professor Emeritus in the Department of Philosophy, former Senate and recipient our Distinguished Faculty Scholar Award, passed away.

### **GENERAL INFORMATION**

The Senate voted unanimously to endorse the Task Force on Mentoring report and recommendations. A memo has been sent to the President noting this endorsement and asking that she let the Senate know what action is taken. Visit <https://www.miami.edu/faculty-senate/05-06-Senate/3-22/Mentoring.pdf> to view a copy of the report as presented to the Faculty Senate.

The University is continuing to move forward in its SACS reaccreditation process. You are invited to see more at [www.miami.edu/sacs/](http://www.miami.edu/sacs/).

The Provost has now gone through one cycle of the tenure and promotion process. He is actively considering what kinds of changes he might suggest be implemented. Over the next few months we are likely to hear more specifics from him and become engaged in a joint project to create a process that will be reliably better for the junior faculty and for the institution.

You should have received an e-mail from the Faculty Senate office soliciting your interest in committee service. Please do volunteer and encourage your colleagues to do so. Much of the most important work of the Senate is done by and in its committees. To access the on-line form that includes details on each of the committees, visit [www.miami.edu/FS-committee-service/](http://www.miami.edu/FS-committee-service/). The deadline to submit forms is Monday, April 17, 2006.

### **IMPORTANT SENATE ACTIONS:**

The Senate has approved and legislation has been forwarded to the President as follows:

\*Legislation #2005-08(B)-Establishment of the Center for Translational Research

Legislation #2005-09(D)-Modification to the charge of the James W. McLamore Outstanding Service Award Committee. This legislation will clarify that the General Welfare Committee, may, but is not required to, recommend more than one nominee to the Faculty Senate. (Visit <https://www.miami.edu/faculty-senate/2005-legislation/2005-09.pdf> to view)

\*Legislation #2005-10(B)-Modification of the Faculty Senate apportionment formula. This legislation clarifies the formula and also gives the General Welfare Committee, instead of the Chair of the Senate, the task of making a recommendation regarding an apportionment of senators annually to the Faculty Senate.

Legislation 2005-11(D)-Resolution wishing Henry King Stanford a rapid and full recovery (Visit <https://www.miami.edu/faculty-senate/2005-legislation/2005-11.pdf> to view)

Legislation #2005-12(D)-Vote of confidence for the Provost in creating a culture of academic excellence (Visit <https://www.miami.edu/faculty-senate/2005-legislation/2005-12.pdf> to view)

\*Legislation #2005-13(B)-Modification of the Faculty Manual regarding Misconduct in Research Policy

Legislation #2005-14(D)-Resolution pertaining to UNICCO. This legislation re-emphasizes recommendations made in 2001 requesting that our UNICCO-employed staff be afforded a

"Living Wage" and be extended a variety of benefits as well, the most important being affordable health coverage. It also urges that all parties involved in the current labor situation adhere to all labor laws and refrain from all unfair labor practices. (Visit <https://www.miami.edu/faculty-senate/2005-legislation/2005-14.pdf> to view)

\* Legislation will be posted to the website once approved by the President. If you would like to review the proposed legislation as sent, please contact the Senate office (305)284-3721 or [facsen@miami.edu](mailto:facsen@miami.edu).

Copyright 1997-2005  
University of Miami,  
All Rights Reserved.

Faculty Senate  
P.O. Box 248106  
Coral Gables, FL 33124-4634  
Telephone: 305-284-3721

## Faculty Senate Office

---

**From:** Faculty Senate Office  
**Sent:** Wednesday, August 02, 2006 10:37 AM  
**To:** Brenner, Lynne; Brown, Otis B.; Buckley, Reba; Cabrera, Jose M.; Carpintero, Yvette M.; Garcia, Cecilia; Glemaud, Rose-Kettie; Goff-Tlemsani, Sarah Elaine; Goldschmidt, Pascal J.; Gonzalez, Martha Lopez; Grogg, Sam; Halleran, Michael Ros; Herrera, Marisela; Hipp, James William; Lepisto, Catherine; Lynch, Dennis O.; Orehovec, Paul Martin; Peragallo, Nilda P; Plater-Zyberk, Elizabeth M.; Prilleltensky, Isaac; Ripoll, Blanca Ileana; Robitaille, Magaly; Schwab, Edna L; Segrera-Guerra, Lourdes Eifeen; Stadmir, Dawn Renee; Sugrue, Paul K; Temares, M. Lewis; Ullmann, Steven G.; Walker, William  
**Cc:** Markowitz, Elizabeth Paz  
**Subject:** Approved Faculty Senate Legislation

Below is a complete list of legislation that has been approved for 2005-06:

Legislation #2005-01(B) - Name change for the Women's Studies program in the College of Arts and Sciences  
<https://www6.miami.edu/faculty-senate/2005-legislation/2005-01B.pdf>

Legislation #2005-02(B) - Establishment of the J. Weiss Center for Social, Medical, and Health Inequalities  
<https://www6.miami.edu/faculty-senate/2005-legislation/2005-02B.pdf>

Legislation #2005-03(B)- Establishment of Cancer Biology Ph.D. Program  
<https://www6.miami.edu/faculty-senate/2005-legislation/2005-03B.pdf>

Legislation #2005-04(B)- Modification of the Faculty Manual Regarding Misconduct in Research Policy  
<https://www.miami.edu/faculty-senate/2005-legislation/2005-04b.pdf>

Legislation #2005-05(B)- Establishment of the Johnson A. Edosomwan Leadership Institute  
<https://www.miami.edu/faculty-senate/2005-legislation/2005-05b.pdf>

Legislation #2005-06(D) - Resolution regarding the presentation of professional boxing at the University's BankUnited Center  
<https://www.miami.edu/faculty-senate/2005-legislation/2005-06.pdf>

Legislation #2005-07 (D) - Amendment to the charge of the Outstanding Teaching Award Committee (section C19.3 of the Faculty Manual)  
<https://www.miami.edu/faculty-senate/2005-legislation/2005-07.pdf>

Legislation #2005-08 (B) - Establishment of the Wallace H. Coulter Center for Translational Research  
<https://www.miami.edu/faculty-senate/2005-legislation/2005-08B.pdf>

Legislation #2005-09 (D) - Modification to the charge of the James W. McLamore Outstanding Service Award  
<https://www.miami.edu/faculty-senate/2005-legislation/2005-09.pdf>

Legislation #2005-10 (B) - Modification of Faculty Senate apportionment formula (Faculty Manual section B3.3)  
<https://www.miami.edu/faculty-senate/2005-legislation/2005-10.pdf>



## Faculty Senate Office

---

**From:** Faculty Senate Office  
**Sent:** Friday, June 09, 2006 12:57 PM  
**To:** DL - Faculty - All Campuses  
**Subject:** Faculty Senate Legislation for the 2005-2006 term

As required by the Faculty Manual, the Secretary of the Senate is to notify faculty of all approved legislation.

Visit <https://www.miami.edu/faculty-senate/Temp/legislation.pdf> to view a list of and links to the legislation for the 2005-2006 term.

Please note that you will need to have Adobe Acrobat Reader to access the information. For a free download, visit: <http://www.adobe.com/products/acrobat/readstep.html>.

If you are not able to access the links by clicking on them within this e-mail, copy the entire url from https to .pdf (or .html) and paste it in your browser.

Please contact the Senate office if you have any questions.

Thank you.

Kimberly Litman  
Faculty Senate Office  
325 Ashe Admin. Bldg.  
Loc 4634  
(305)284-3721 (office)  
(305)284-5515 (fax)  
<http://www.miami.edu/FacultySenate>

**LIST OF FACULTY SENATE LEGISLATION FOR THE 2005-2006 TERM**  
(click on the link to view legislation)

- **Name change for the Women's Studies program in the College of Arts and Sciences**  
<https://www.miami.edu/faculty-senate/2005-legislation/2005-01B.pdf>
- **Establishment of the J. Weiss Center for Social, Medical, and Health Inequalities**  
<https://www.miami.edu/faculty-senate/2005-legislation/2005-02B.pdf>
- **Establishment of Cancer Biology Ph.D. Program**  
<https://www.miami.edu/faculty-senate/2005-legislation/2005-03B.pdf>
- **Modification of the Faculty Manual Regarding Misconduct in Research Policy**  
<https://www.miami.edu/faculty-senate/2005-legislation/2005-04b.pdf>
- **Establishment of the Johnson A. Edosomwan Leadership Institute**  
<https://www.miami.edu/faculty-senate/2005-legislation/2005-05b.pdf>
- **Resolution regarding the presentation of professional boxing at the University's BankUnited Center**  
<https://www.miami.edu/faculty-senate/2005-legislation/2005-06.pdf>
- **Amendment to the charge of the Outstanding Teaching Award Committee (section C19.3 of the Faculty Manual)**  
<https://www.miami.edu/faculty-senate/2005-legislation/2005-07.pdf>
- **Establishment of the Wallace H. Coulter Center for Translational Research**  
<https://www.miami.edu/faculty-senate/2005-legislation/2005-08B.pdf>
- **Modification to the charge of the James W. McLamore Outstanding Service Award**  
<https://www.miami.edu/faculty-senate/2005-legislation/2005-09.pdf>
- **Modification of Faculty Senate apportionment formula (Faculty Manual section B3.3)**  
<https://www.miami.edu/faculty-senate/2005-legislation/2005-10.pdf>
- **Resolution wishing Henry King Stanford a rapid and full recovery**  
<https://www.miami.edu/faculty-senate/2005-legislation/2005-11.pdf>
- **Vote of confidence for the Provost in creating a culture of academic excellence**  
<https://www.miami.edu/faculty-senate/2005-legislation/2005-12.pdf>
- **Modification of the Faculty Manual regarding Misconduct in Research Policy (Addendum to Legislation #2005-04(B) approved on 12/29/05)**  
<https://www.miami.edu/faculty-senate/2005-legislation/2005-13.pdf>

- **Resolution pertaining to UNICCO**  
<https://www.miami.edu/faculty-senate/2005-legislation/2005-14.pdf>
- **Resolution pertaining to UNICCO (Addendum to Legislation 2005-14)**  
<https://www.miami.edu/faculty-senate/2005-legislation/2005-15.pdf>
- **Elimination of restriction of the required second major, for students in the School of Communication, to those within Arts and Sciences**  
<https://www.miami.edu/faculty-senate/2005-legislation/2005-16.pdf>
- **Addition of a graduate student as an *ex officio* member of the Student Affairs Committee**  
<https://www.miami.edu/faculty-senate/2005-legislation/2005-17.pdf>
- **Addition of Senior Vice Provost and Dean of Undergraduate Education as *ex officio* member of the University Curriculum Committee**  
<https://www.miami.edu/faculty-senate/2005-legislation/2005-18.pdf>
- **Language to rectify discrepancy in the Bulletin and the Faculty Manual regarding credit for laboratory hours**  
<https://www.miami.edu/faculty-senate/2005-legislation/2005-19.pdf>

Academic Deans' Policy Council  
Minutes of the Meeting of March 1, 2006

Senate Matters

Mary Coombs informed the deans about legislation going to President Shalala regarding the establishment of the Wallace H. Coulter Center for Translational Research. She reminded the deans about the Outstanding Teaching Award Ceremony to honor Dr. Diana Lopez, Miller School of Medicine, on March 1<sup>st</sup> at 4 pm at Storer Auditorium and the Distinguished Faculty Scholar Award Ceremony to honor William J. Whelan, Miller School of Medicine on April 5<sup>th</sup> at 4 pm at Storer Auditorium and the celebration of the dedication ceremony of the John Knoblock Faculty Senate Office on March 29 at 4 pm on the second floor lobby of the Ashe Building.

-2005-08

Respectfully submitted,



Neli Li

Meeting adjourned 9:35 a.m.

Academic Deans' Policy Council  
Minutes of the Meeting of February 8, 2006

Provost LeBlanc encouraged the deans to focus on which QEP the schools/colleges will benefit the most. He asked the deans for their views and thoughts. Andy Gomez will work on a conceptual draft and present it for further discussion. Provost LeBlanc asked the deans to discuss this matter with their faculty as soon as possible.

Coulter Center for Translational Research

2005-08

Dean Glaser briefed the deans regarding the mission of the Wallace H. Coulter Center at UM, namely to promote translational research in biomedical science and engineering by capitalizing on research projects that address an unmet clinical need and have commercial potential. Consensus was unanimous to approve the center.

Commencement, Student Profile, Student Speaker

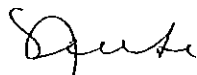
Pat Whitely informed the deans about the May commencement schedule. She asked the deans for their assistance with the selection process of the student speaker. Applicants need to have 3.5 gpa or higher, full time student, and a written essay. A committee will question the applicant and will need to presents the speech. The committee will be composed of two faculty members, a student, Perri Lee Roberts and Pat Whitely. That will be the screening process from now on. Also, looking for unusual student profiles and the criteria is: scholarships, leadership, citizenship, academics, etc. She will be sending out an email to the deans with the information.

Senate Matters

Mary Coombs reminded the deans about the Outstanding Teaching Award Ceremony to honor Dr. Diana Lopez, Miller School of Medicine, on March 1<sup>st</sup> at 4 pm at Storer Auditorium. Dr. Richard Light's visit sponsored by the Faculty Senate and Andy Gomez, regarding SACS Academic Assessment workshop for faculty on Tuesday, February 21 at 3 pm at the McLamore Executive Education Center. A resolution was passed regarding the presentation of professional boxing at the BankUnited Center.

Provost LeBlanc reported that at the last Senate meeting retirement plans were discussed and a resolution was passed to give the Administration the flexibility to go to the Board with the proposals as discussed. Plans would be implemented in 2007.

Respectfully submitted,

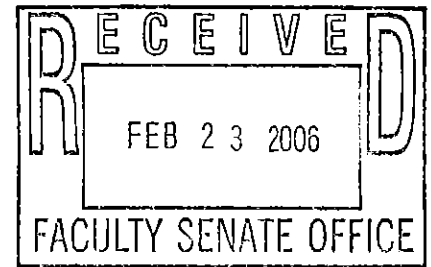


Neli Li

Meeting adjourned 9:40 a.m.



IN/OUT KL RH (F) C



Office of the Provost

**ACADEMIC DEANS' POLICY COUNCIL**  
Minutes of the Meeting of February 8, 2006

Present

- Tom LeBlanc
- Pat Whitely
- Perri Lee Roberts
- Paul Orehovec
- Luis Glaser
- Dennis Lynch
- Lew Temares
- Paul Sugrue
- Lizz Plater-Zyberk
- Bill Hipp
- Sam Grogg
- Michael Halleran
- Otis Brown
- Nena Peragallo
- Mary Coombs
- Bill Walker
- Andy Gomez
- Norm Altman

Guests

- President Shalala
- Mary Sapp
- Scott Ingold

The meeting was called to order at 8:35 a.m.

SACS

Andy Gomez informed the deans that the academic bulletin needs to be updated. He thanked Mary Sapp for the degree program reports. These reports were emailed to the deans and he asked them to review and make changes as necessary and forward to Mary Sapp. He asked the deans to call him or Mary Sapp with inquiries. Scott Ingold briefed the deans about his findings with the associate deans regarding bulletin updates, guidelines, and a more accurate process. Andy Gomez discussed the Quality Enhancement Plan required for the SACS accreditation; this is for an academic plan that enhances the student learning environment at the university, particularly the undergraduate level. Discussions have taken place about possible topics, such as writing across the curriculum, advising, mentoring, and communication.



Print this page | E-mail

UM Home > Faculty Senate Home page > **2-22-06-FS-agenda****2-22-06-FS-agenda**

**FACULTY SENATE MEETING**  
**Rosenstiel Campus, Seminar Room**  
**February 22, 2006 - 3:30 P.M.**  
**AGENDA**

**#FOR YOUR CONVENIENCE, CLICK HERE FOR A COMPLETE AGENDA PACKET (just click and print)**

<b>A.</b>	<b><u>Introductory Matters</u></b>	<b>Approx.</b>
		<b>Time</b>
	<b><u>A1. #Chair's remarks</u></b>	3:30
	<b>A2. President's remarks</b>	3:35
	<b>A3. Approval of today's agenda</b>	3:50
	<b><u>A4. #Approval of minutes of January 25, 2006</u></b>	3:55
	<b>A5. Other announcements</b>	4:00
<b>B.</b>	<b><u>General Matters</u></b>	
	<b><u>B1. #Proposal for the establishment of the Center for Translational Research – N. Kenyon</u></b>	4:05
	<b><u>B2. #Proposed revision to the James W. McLamore Award nominating criteria</u></b>	4:20
	<b><u>B3. #Proposed modification to section B3.3 of the Faculty Manual to clarify formula used for Senate apportionment</u></b>	4:30
<b>C.</b>	<b><u>Other Business</u></b>	4:40
<b>D.</b>	<b><u>Adjournment</u></b>	

# related material linked in Adobe Acrobat format. You must have Adobe Acrobat Reader installed on your computer in order to access the material. **Click here** for installing instructions.

Copyright 1997-2005  
University of Miami,  
All Rights Reserved.

Faculty Senate  
P.O. Box 248106  
Coral Gables, FL 33124-4634  
Telephone: 305-284-3721

**Proposal to the Faculty Senate for Establishment of the  
Wallace H. Coulter Center for Translational Research**

**Mission**

The mission of the Wallace H. Coulter Center at the University of Miami is to promote translational research in biomedical science and engineering by capitalizing on research projects that address an unmet clinical need and have commercial potential. This will be achieved by providing the investigator with the infrastructure, core capabilities and expertise to carry the project from an experimental finding to a tangible application that enhances quality of life and has significant impact on public health. Projects will be selected from investigators at the U of Miami, including but not necessarily limited to the:

- Diabetes Research Institute,
- Sylvester Comprehensive Cancer Center,
- Miami Project to Cure Paralysis,
- Bascom Palmer Eye Institute,
- Department of Biomedical Engineering.

**Vision**

To become a leading technology development organization within an academic setting in the United States, with an emphasis on applied bioscience that has significant clinical and commercial impact on the socio-economic wellbeing of the public. The Center will be the seedbed for breakthrough treatments for diabetes, cancer, arthritis, eye disease, spinal cord and traumatic brain injury and paralysis. This Center will harness the University of Miami's proven leadership in large scale cell culturing, cellular and tissue transplantation, tissue regeneration and implantable biomaterials and devices.

**Goals**

- To become a self-sustaining center within 9 years.
- To establish a team of highly effective individuals, including a Director of Operations and a Director of Business Development, to lead the Center's efforts.
- To establish the administrative infrastructure to carry out the goals and objectives of the Center.
- To identify and manage translational research projects which address an unmet clinical need and have commercial potential and transition the projects to a commercial venture.



## **Participants**

The Center has no permanent faculty. Students and fellows will participate in Center activities but not as part of a formal instruction process. The President will designate a university official (President's Designee) to oversee the activities of the Center and the Center Director. A Director of Business Development and a Director of Operations will be appointed to assist the Director with technology transfer/business relationships and administrative/operational concerns, respectively. Appendix C details the reporting relationships. An Internal Advisory Board, consisting of the President's Designee (ex officio), the Center Director (ex officio) and senior faculty who are actively involved in translational research related to the Center's mission, will be appointed and will meet quarterly (at a minimum) to oversee the activities of the Center. An External Advisory Board, consisting of individuals from the business community (venture capitalists, entrepreneurs, business men and women) who are qualified to assess the Center's progress in relation to commercial potential, will meet twice a year to further overview the Center's performance and provide guidance.

On an annual basis, the President's Designee will formally review the Director's performance. Should the need for a new Director arise, the President's designee will identify and appoint a new Director. As stated in the faculty manual of the University of Miami (C18.2.1), a review will be required 5 years after initiation of the center in order to obtain approval from the Faculty Senate for continued operation.

## **Facilities**

The Center shares the cGMP facility that constitutes the 4th floor of the Diabetes Research Institute with the DRI for the conduct of clinical trials that involve cells or biological modifiers. In addition, 5,000 sq ft on the second floor of the Fox building is being renovated to serve as flexible wet lab space that will incorporate tissue culture and open lab space, plus a conference room for the center and offices for 1) a technology transfer/business director hire and 2) a regulatory hire and a lab manager. Additional administrative space (the Director's office, an office for the Operations Director and a shared meeting room space) is located on the 6th floor of the DRI. This constitutes 16,000 sq ft of space in total.

## **Project Selection**

Translational research projects in biomedical science and engineering that address an unmet clinical need and have commercial potential will be considered for entry into the Center. Projects will be selected from proposals submitted by faculty investigators at the U of Miami, including but not necessarily limited to, the Diabetes Research Institute, Sylvester Comprehensive Cancer Center, Miami Project to Cure Paralysis, Bascom Palmer Eye Institute, and the Department of Biomedical Engineering. As specified by the Wallace H Coulter Foundation, a Selection Committee consisting of the President's Designee, the Center Director, the Deans of the Medical School and the School of Engineering, and a venture capitalist and a business person will select projects for entry into the center. The Internal Advisory Board, as well as the Director of Business Development, will also review the applications and will provide a recommendation to the Selection Committee.

Requests for proposals will issue once or twice a year (frequency will be determined based on availability of space and funding). Applicants must be full time faculty members submitting projects that meet the criteria of translational research in biomedical science and engineering. Projects will not remain in the center for more than 1-2 years without resubmission and must have clearly defined milestones. Projects must meet the following criteria: a) address an unmet clinical need, b) have the potential to be in a phase one trial within 3-5 years, or in the case of a device, to be marketable within 5 years, c) patent or similar protection can be obtained for such product by the Center, and d) the product has commercial potential.

### **Sources of Funding**

The Wallace H. Coulter Foundation has awarded a grant of 13,000,000 dollars to the University of Miami. The Center itself will apply for grants and contracts, and additional funds will be supplied by U of M Departments and the school itself. The proposed budget for the center is shown in Appendix B. The required funds, in addition to the Coulter Grant, are expected to come from the grants of investigators using the center and are guaranteed by funding from the participating unit, the Dean of the Miller School of Medicine and the Provost, as shown in Appendix B. In addition, revenues generated from patents will be shared with the Wallace H. Coulter Center; the breakdown will be: 1/3 to the inventors, 1/3 to the department and 1/3 to the Center.

The majority of the Center's budget in year 01-02 will be utilized for renovation and equipment purchase. Salaries for the Director of Operations, Director of Business Development and 1/2 FTE administrative assistant, as well as part of the Director's salary are included. The Center is in the process of contracting for regulatory assistance; within the next 1-2 years, a permanent hire will replace consultants. A lab manager for the flexible wet lab space in Fox and a PhD scientist to oversee cell expansion and production of biological modifiers will be added in the next year. Since the Center must eventually become self-sustaining, and provision of project funds is critical, the focus will be on hiring only absolutely essential personnel. Project funds, purchase of new equipment that allows for access to emerging technologies, dollars for intellectual property concerns (patents, attorneys), equipment maintenance contracts, space charges and other general needs (phones, network, etc.) are also included in the budget.

**Additional Information: Proposal to the Faculty Senate for Establishment of the  
Wallace H. Coulter Center for Translational Research**

Dr. Luis Glaser is the President's Designee.

Dr. Norma Sue Kenyon (vita in appendix A) will serve as Center Director.

An Internal Advisory Board has been established and consists of Drs.:

Herman Cheung - Biomedical Engineering

Luis Glaser - President's Designee

Camillo Ricordi - Diabetes Research Institute

Dalton Dietrich - Miami Project to Cure Paralysis

Elizabeth Fini - Bascom Palmer Eye Institute

Norma Kenyon - Center Director

Eckhard Podack - Sylvester Cancer Center

Joseph Rosenblatt - Sylvester Cancer Center

Dr. Robert Strauss of Noven Pharmaceuticals has agreed to chair the External Advisory Board and he is working with Drs. Glaser and Kenyon to identify and appoint members.

Project Selection Committee

Dr. John Clarkson

Dr. Philip George

Dr. Luis Glaser

Dr. Norma Kenyon

Dr. Leonard Pinchuk

Dr. Lewis Temares

## **Appendix A**

Curriculum vitae for Sue Kenyon – Center Director

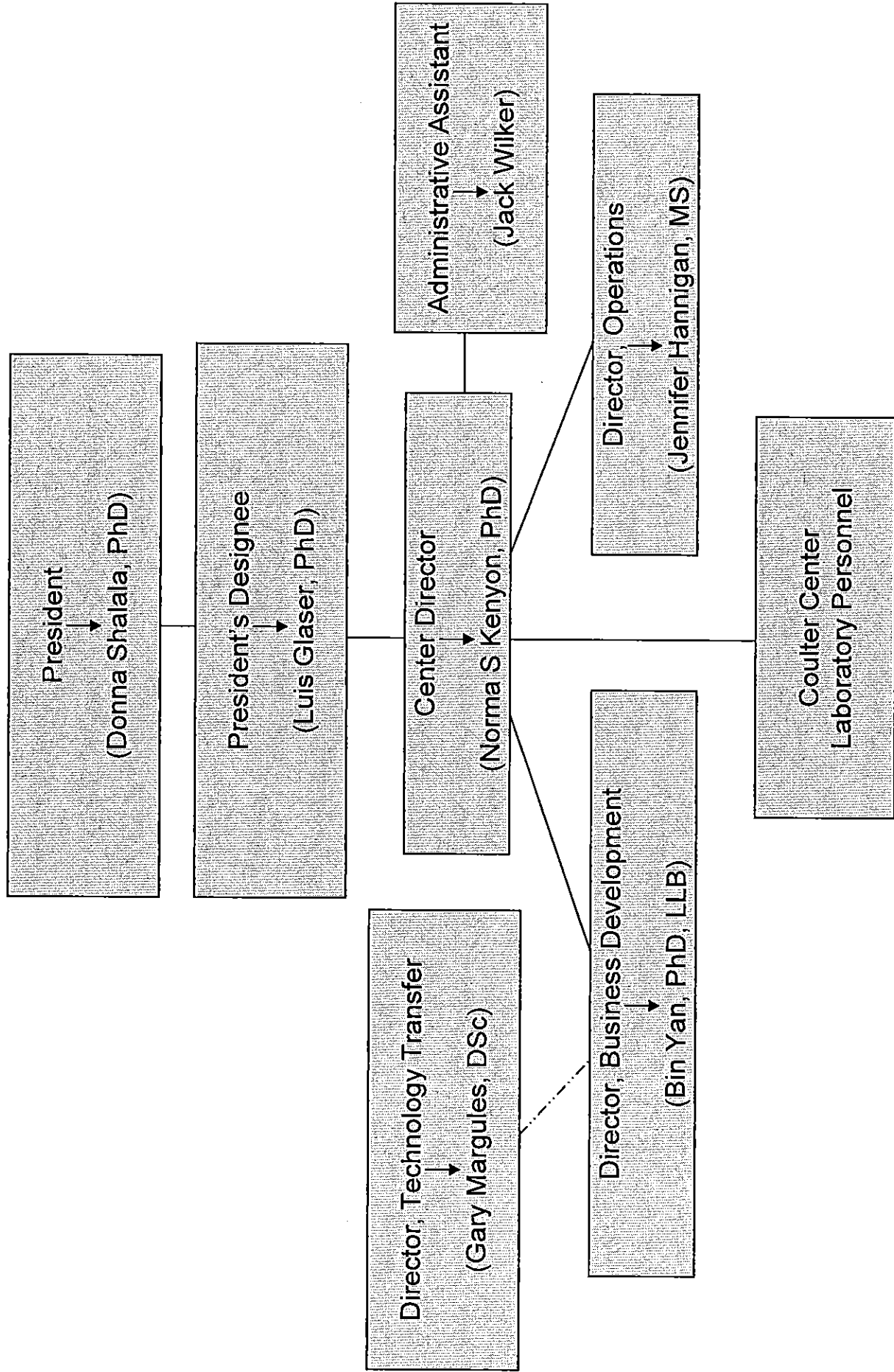
Visit <https://www.miami.edu/faculty-senate/Temp/appendix-A-cv.pdf> to view.

Appendix B  
Budget for WHC Center

	UM	WHCC					
Year 01*	1,500,000	2,600,000					
Year 02*	250,000	2,600,000					
Year 03*	500,000	2,600,000					
Year 04	750,000	2,600,000					
Year 05	1,000,000	2,600,000					
Year 06	2,000,000						
Year 07	2,000,000						
Year 08	2,000,000						
Year 09	2,000,000						
total	12,000,000	13,000,000					

\*total of \$2,000,000/\$2,250,000 credit in years 01-03 can be given to UM for funds spent for the space to house the center

# Appendix C: Wallace H Coulter Center Reporting Relationships



**General Welfare Committee**  
**February 8, 2006**  
**3:30 p.m.**  
**School of Law Library-(conference room, 4<sup>th</sup> floor)**

1. Chair's remarks (3:30)
2. Proposal for the establishment of the Center for Translational Research – N. Kenyon (3:40)
3. #Center on Hemispheric Studies – L. Glaser (3:55)  
# QEP update – A. Gomez
4. #Revisit James W. McLamore Award nominating criteria (4:10)
5. Occasional award for administrators (4:30)
6. Discuss request from a faculty member to make available the curriculum vitas of chair/deans being evaluated (4:45)
7. #Proposed modification to section B3.3 of the Faculty Manual to clarify formula used for Senate apportionment (4:55)
8. Other business (5:05)

#related material included

# Tracking Sheet

KL

**Subject:** Establishment of the Wallace H. Coulter Center for Translational Research

Page 1 of 3

## History of action taken

DATE	ACTION TAKEN
2/10/05	After reading an article in daily clips regarding the establishment of the Wallace H. Coulter Center for Translational Research, I emailed M. Coombs to ask her if this is something that should have been brought to the Faculty Senate first.
	She emailed L. Glaser stating that from the description in the article, this sounds like a center to coordinate and promote research. She stated that if it is within the Medical school, it can be a B6.6 Center, but would still need approval of the name.
	The Provost responded as follows: It means to take projects which are beyond the "discovery phase" and get them to the point of commercialization. The original faculty will work on them and the center has no faculty and no independent research. The projects come to them because they have infrastructure to do the work under conditions that will allow the results to for example get through FDA approval.
2/11/05	M. Coombs responded as follows: I looked at this again, and consulted with a couple of colleagues in more relevant disciplines. I am more convinced that this is a center that fits squarely within B6.6: it involves research, even if its not "independent" but a continuation/ "translation" of research already done, and by faculty, even if they aren't faculty "of" the center. The rules of the Manual should be construed liberally. If one is to have two categories, with the paradigms the CESP on the one hand and the Wellness Center on the other, this seems to fit into the former as an "academic" center supporting faculty work as faculty. Particularly given the quite modest requirements for B6.6 approval, let's just get this in process and get it approved.
	L. Glaser responded as follows: OK. We will be there but not this month.
	M. Coombs asked that I tentatively schedule it for our March meetings.
	I emailed L. Glaser and asked who I should deal with regarding proposal submission guidelines and deadlines, him or Dr. Ricordi. He said that I should deal with him directly.
2/15/05	I sent L. Glaser with a cc to Liz a link to the guidelines and gave a deadline date for submission of 3/2/05. I confirmed with Liz that this was acknowledged.
2/16/05	Liz sent me an email stating that it is not possible to have this proposal ready for the March meeting, she said that L. Glaser will try for the April meeting.
	I sent her the deadline dates for the April GWC meeting for submitting material (by April 6 <sup>th</sup> ).
	Follow up tickler set for March 11, 2005.
3/11/05	Sent Liz email asking if the plan was still to present in April.



# Tracking Sheet

**Subject:** Establishment of the Wallace H. Coulter Center for Translational Research

Page 2 of 3

## History of action taken

DATE	ACTION TAKEN
3/14/05	Received a call from Liz stating that the Provost is in the process of putting together an advisory committee so this item would most likely not be ready for April... more like August.
7/7/05	Since I was going on vacation and would not return until August 9 <sup>th</sup> , I sent Liz an email asking for an update regarding and asked if the plan was still to bring this forward in August.
7/18/05	Liz responded that Dr. Glaser would prefer to wait until September, due to vacation schedules. He will meet with directors of both centers when he returns from vacation next week and will provide materials they prepare for Dr. LeBlanc to review. Tentatively slated for September GWC/FS meetings.
8/22/05	Sent Liz a follow-up email letting her know the deadline dates for presenting to GWC and asking if it was still the plan to bring this forward in September.
9/1/05	Sent Liz email again since I did not receive a response to the 8/22/05 req. she replied that she had checked on this a couple of times but had not received a status report. She said that she would check again.
9/7/05	At our weekly staff meeting, I asked M. Coombs if she could ask the Provost, at their 2:00 meeting, the status of these reports since they are supposed to come forward to GWC/FS this month. M. Coombs inquired with the Provost who stated that he was unaware that his office was supposed to bring the proposals for this Center forward. She made it clear that there was a commitment from the previous provost and that the impediment now was between his office and the people he needed documentation.
9/30/05	Sent Liz email asking for the status and if the plan was still to bring it forward in October.
10/3/05	I asked M. Coombs if she received any word regarding this. She said that I should check with Liz again. Before I could contact Liz, M. Coombs forwarded an email to me for L. Glaser asking if they could get together to discuss this Center and the Center on Hemispheric Studies. M. Coombs responded to him as follows: I'm a bit perturbed if the subtext here is that these are still not ready to come forward to the Senate in October. Both have been announced long ago and the Senate got a specific promise in the spring re Hemispheric when Susan K. was introduced.

